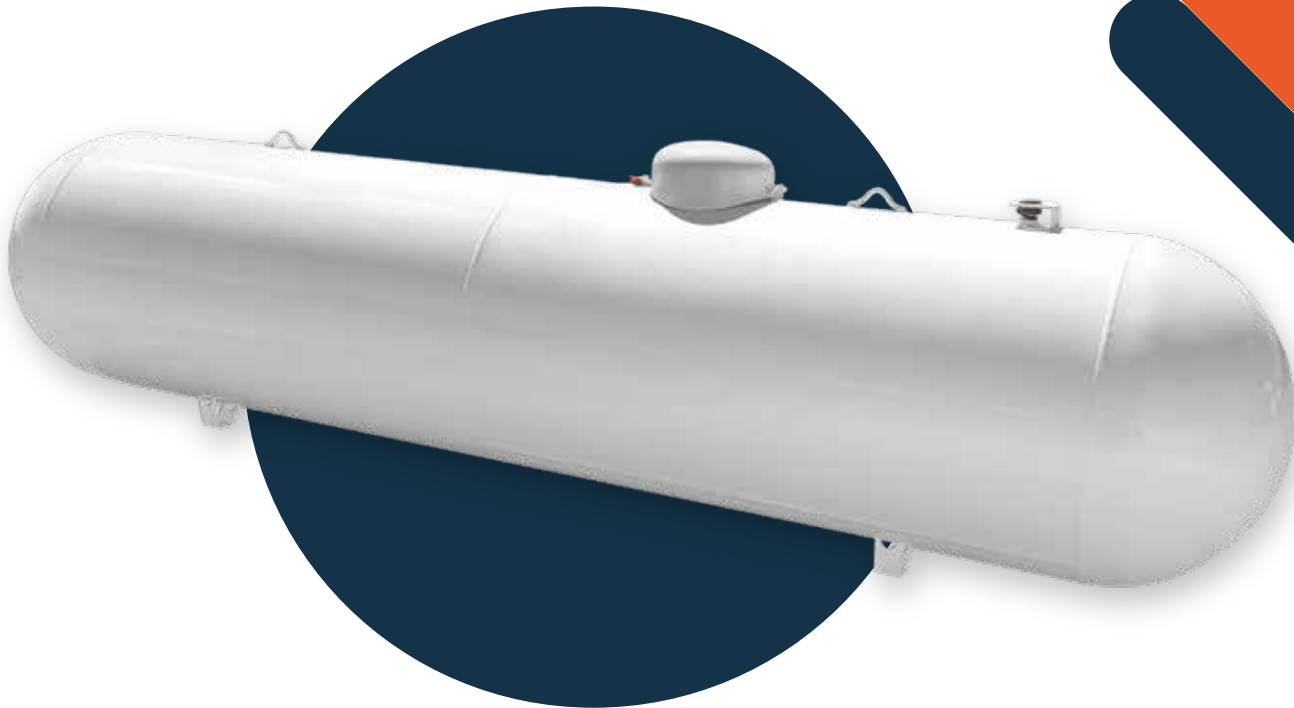


ABOVEGROUND CALIFORNIA DOMESTIC



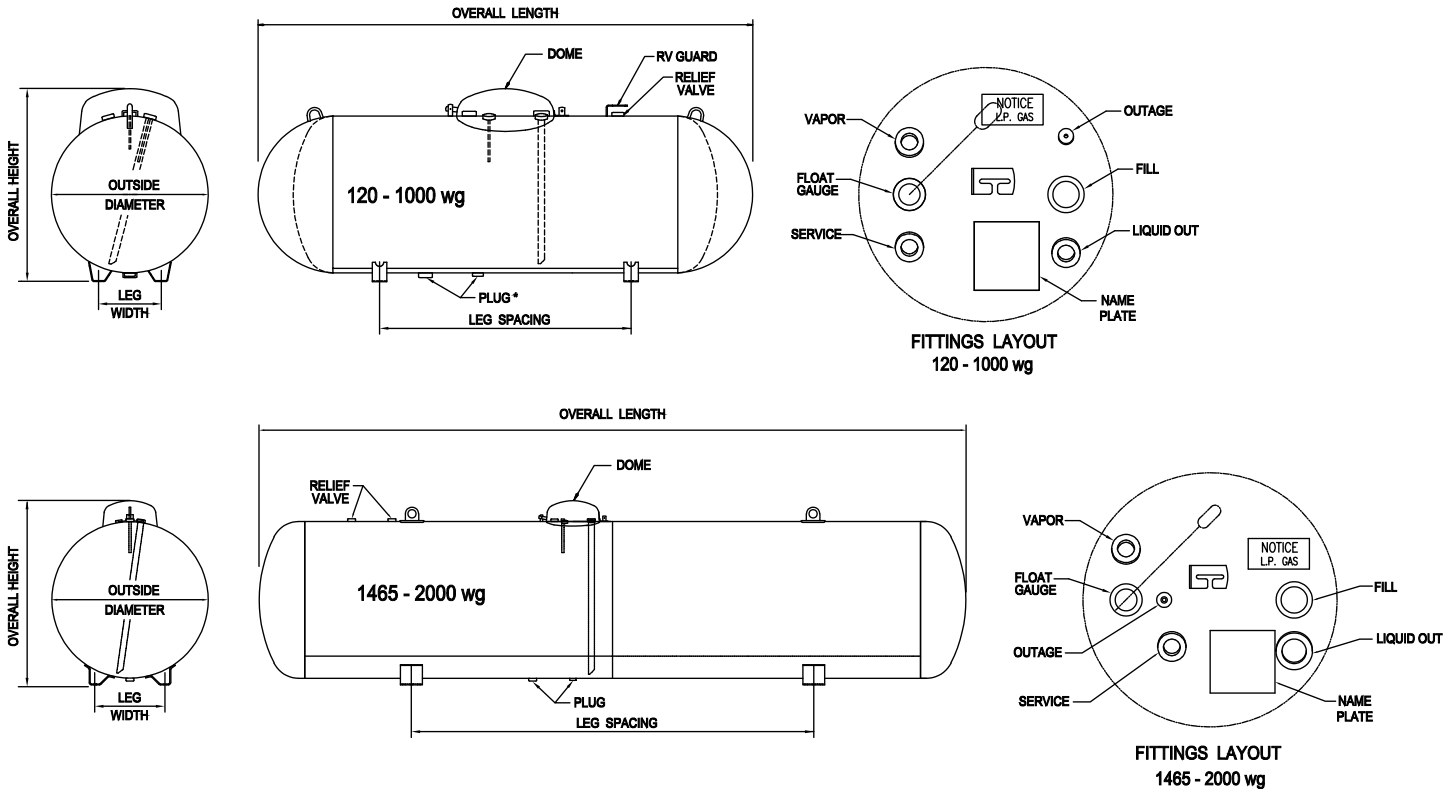
GENERAL SPECIFICATIONS

Conforms to the latest edition of the ASME code for Pressure Vessels, Section VIII, Division 1, and California Code of Regulations Title 8, Chapter 4, Subchapter 1.
Steel Galvanized domes in select colors.
Vacuum Purged
Superior Coating
#72 liquid level outage valve orifice.
Registered with the National Board.



209 State Highway 121 BYP
STE 22
Lewisville, TX 75067

888 558 8225
customerservice@triarccorp.com



CALI. VESSEL DIMENSIONAL INFORMATION

All vessels dimensions are approximate

Water Capacity	Outside Diameter	Head Type	Overall Length	Overall Height	Leg Width	Leg Spacing	Weight	Quantity	
								Full Load	Per stack
*120 wg. 454.2 L	24" 609.6 mm	Ellip	5' - 5 13/16" 1671.6 mm	2' - 8 1/4" 819.2 mm	10 1/8" 257.2 mm	3' - 0" 914.4 mm	249 lbs. 112.9 kg.	96	12
*250 wg. 946.3 L	31.5" 800.1 mm	Hemi	7' - 2 1/2" 2197.1 mm	3' - 3 3/4" 1009.7 mm	12 3/4" 323.9 mm	3' - 6" 1066.8 mm	472 lbs. 214.1 kg.	54	9
*320 wg. 1211.2 L	31.5" 800.1 mm	Hemi	8' - 11 3/4" 2736.9 mm	3' - 3 3/4" 1009.7 mm	12 3/4" 323.9 mm	4' - 0 1/4" 1225.6 mm	588 lbs. 266.7 kg.	45	9
499 wg. 1892.5 L	37.42" 950.5 mm	Hemi	9' - 10" 2997.2 mm	3' - 9 11/16" 1160.5 mm	15" 381.0 mm	5' - 0" 1524.0 mm	871 lbs. 395.1 kg.	30	6
1000 wg. 3785.0 L	40.96" 1040.4 mm	Hemi	15' - 10 13/16" 4846.6 mm	4' - 1 3/8" 1254.1 mm	16 1/4" 412.8 mm	9' - 0" 2743.2 mm	1729 lbs. 784.3 kg.	15	5
1465 wg. 5545.0 L	46.77" 1188 mm	Ellip	17' - 6 7/8" 5356.2 mm	4' - 7" 1397.0 mm	21" 533.4 mm	10' - 0" 3048 mm	2745 lbs. 1245 kg.	12	4
2000 wg. 7570.0 L	46.77" 1188 mm	Ellip	23' - 9" 7239 mm	4' - 7" 1397.0 mm	21" 533.4 mm	14' - 0" 4267.2 mm	3690 lbs. 1673.7 kg.	8	4

* DRAIN PLUG NOT AVAILABLE

* ENG Update: May 2026